

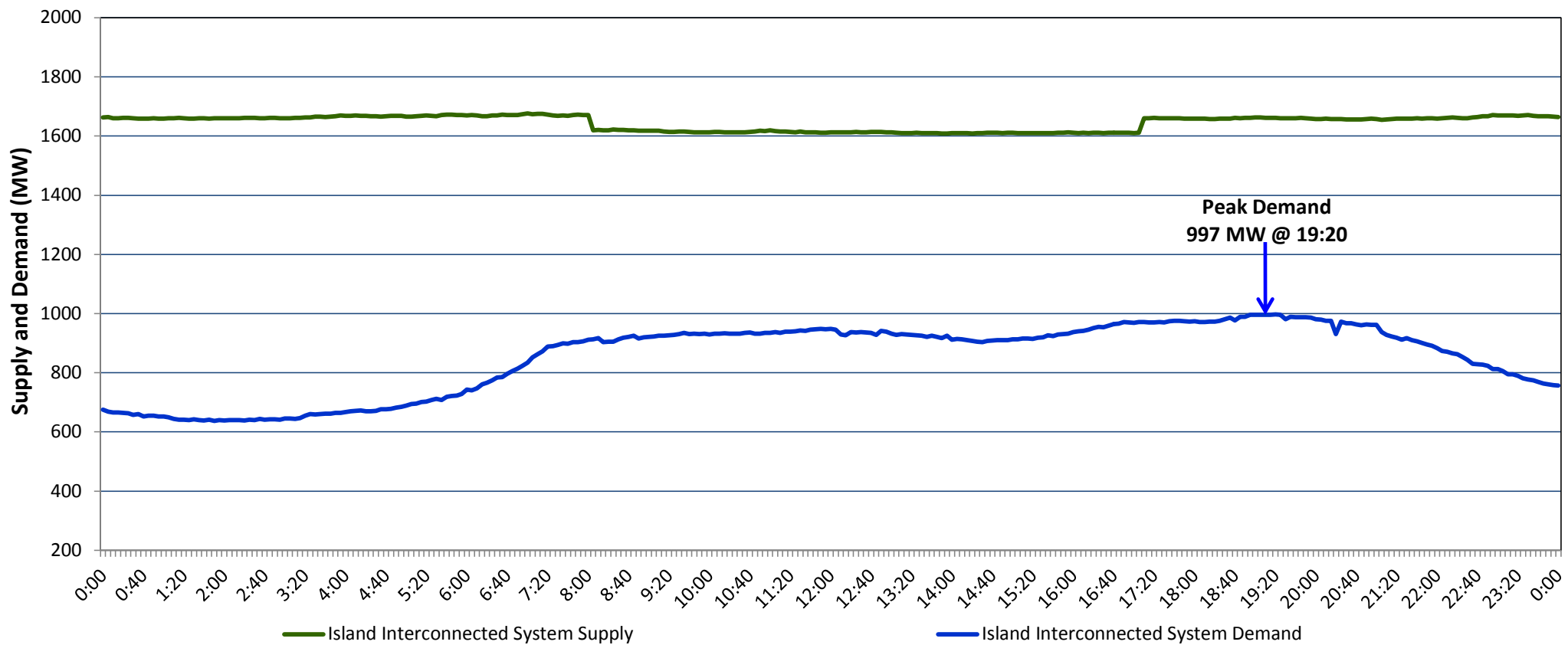
Newfoundland Labrador Hydro (NLH)

Supply and Demand Status Report Filed Wednesday, October 18, 2017

Section 1

Island Interconnected System Supply and Demand

Actual 24 Hour System Performance For Tuesday, October 17, 2017



Supply Notes For October 17, 2017

- A As of 0827 hours, July 31, 2017, Holyrood Unit 2 unavailable due to planned outage 165 MW (170 MW).
- B As of 1229 hours, September 22, 2017, Stephenville Gas Turbine available at 25 MW (50 MW).
- C As of 1211 hours, October 01, 2017, Cat Arm Unit 2 unavailable due to planned outage (67 MW).
- D As of 1337 hours, October 16, 2017, Bay d'Espoir Unit 3 unavailable due to planned outage (76.5 MW).
- E At 0805 hours, October 17, 2017, Hardwoods Gas Turbine unavailable due to planned outage (50 MW).
- F At 1710 hours, October 17, 2017, Hardwoods Gas Turbine available (50 MW).

Section 2

Island Interconnected Supply and Demand

Wed, Oct 18, 2017			Island System Outlook ³		Seven-Day Forecast		Temperature (°C)		Island System Daily Peak Demand (MW)	
							Morning	Evening	Forecast	
Available Island System Supply: ⁵			1,645	MW	Wednesday, October 18, 2017		4	6	1,065	
NLH Generation: ⁴			1,355	MW	Thursday, October 19, 2017		6	7	1,025	
NLH Power Purchases: ⁶			100	MW	Friday, October 20, 2017		11	12	895	
Other Island Generation:			190	MW	Saturday, October 21, 2017		6	5	1,055	
Current St. John's Temperature:			0	°C	Sunday, October 22, 2017		3	2	1,135	
Current St. John's Windchill:			-4	°C	Monday, October 23, 2017		4	7	1,135	
7-Day Island Peak Demand Forecast:			1,135	MW	Tuesday, October 24, 2017		13	14	905	

Supply Notes For October 18, 2017

- Notes:
- Generation outages for running and corrective maintenance are included. These are not unusual for power system operations. They generally do not impact customer supply. The power system operators schedule outages to system equipment whenever possible to coincide with periods when customer demands are low and sufficient supply reserves are available. However, from time to time equipment outages are necessary and reserves may be impacted.
 - Due to the Island Interconnected System being isolated from the larger North American grid, when there is a sudden loss of large generating units some customer's load must be interrupted for short periods to bring generation output equal to customer demand. This automatic action of power system protection, referred to as under frequency load shedding, is necessary to ensure the integrity and reliability of system equipment. Under frequency events typically occur 5 to 8 times per year on the Island Interconnected System and the resultant customer load interruptions are generally less than 30 minutes.
 - As of 0800 Hours.
 - Gross output including station service at Holyrood (24.5 MW) and improved NLH hydraulic output due to water levels (35 MW).
 - Gross output from all Island sources (including Note 4).
 - NLH Power Purchases include: CBPP Co-Gen, Nalcor Exploits, Rattle Brook, Star Lake, Vale capacity assistance (when applicable), and Wind Generation.

Section 3

Island Peak Demand Information

Previous Day Actual Peak and Current Day Forecast Peak

Tue, Oct 17, 2017	Actual Island Peak Demand ⁸	19:20	997 MW
Wed, Oct 18, 2017	Forecast Island Peak Demand		1,065 MW

Notes: 8. Island Demand is supplied by NLH generation and purchases, plus generation owned and operated by Newfoundland Power and Corner Brook Pulp & Paper (Deer Lake Power, DLP).